



# MARINE AND RIVER PROJECTS

Pr015

Process

BUILD ON US



**SOLETANCHE BACHY**

## MARINE AND RIVER WORKS

### DESIGN AND BUILD OF MARINE PROJECTS

- Quays, dry docks and locks
- Jetties
- Earthfill and vibrocompaction of port extensions
- Soil improvement and platforms construction

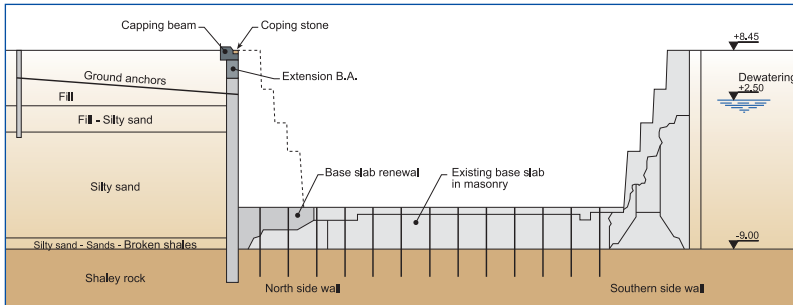
### REFURBISHMENT OF MARINE CONSTRUCTIONS

- Quay reinforcement
- Stonework repair
- Deepening of dredged level of existing quays
- Widening of dry docks and locks

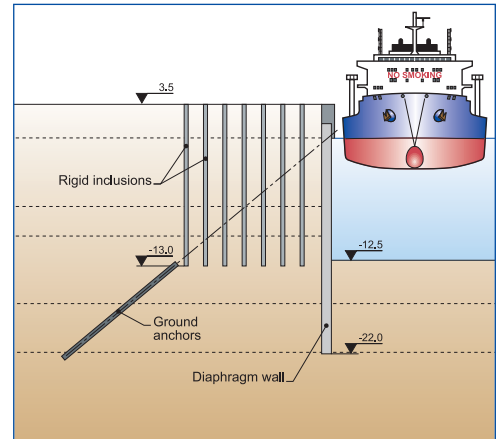
### RIVER WORKS

- Dam, lock and quay construction
- River foundations
- Repair and reinforcement of constructions: bridge pier, lock, quay...
- Watertight curtain for embankment
- Embankment and slope reinforcement

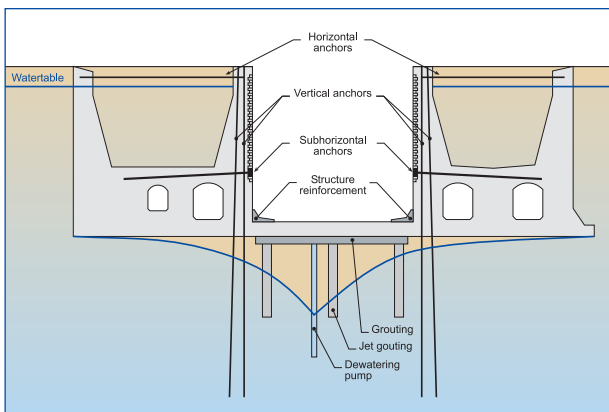
## DESIGN



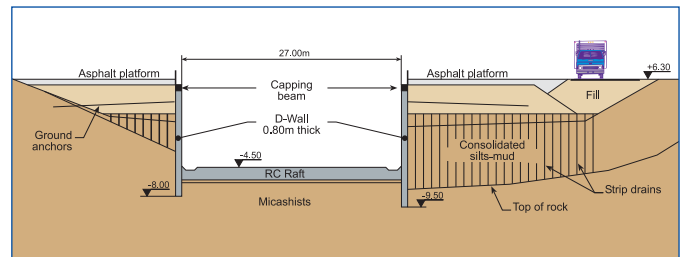
**FRANCE - Brest - Dry dock n°1**  
Widening and modernisation



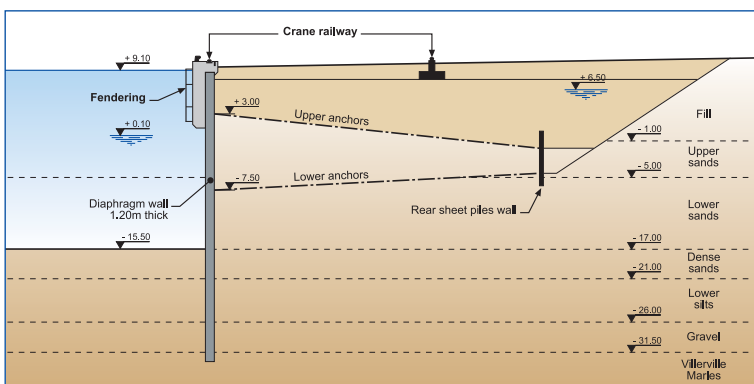
**MEXIQUE - Altamira**  
Oil platform construction terminal



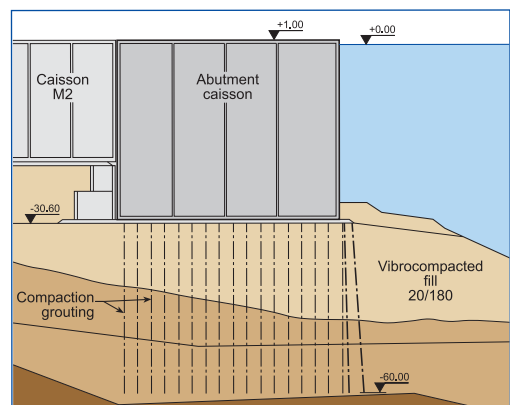
**FRANCE - Concarneau**  
Dry dock



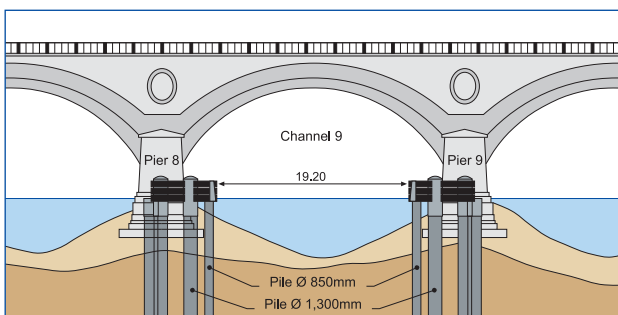
**BELGIUM - Genk**  
Rehabilitation of a river lock



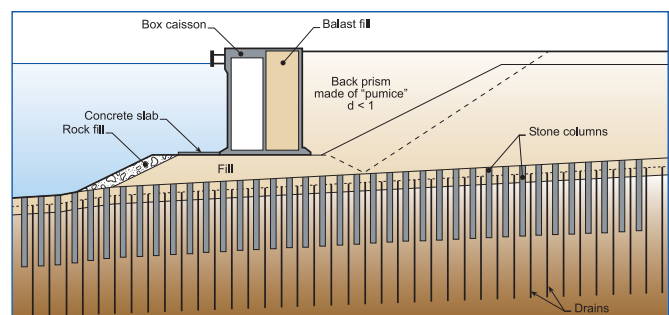
**FRANCE - Le Havre**  
Port 2000



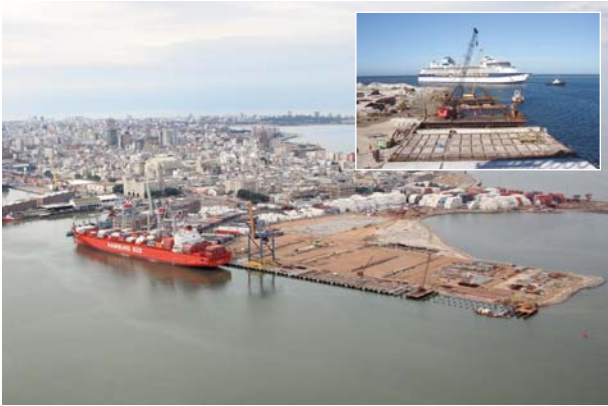
**MONACO**  
La Condamine embankment



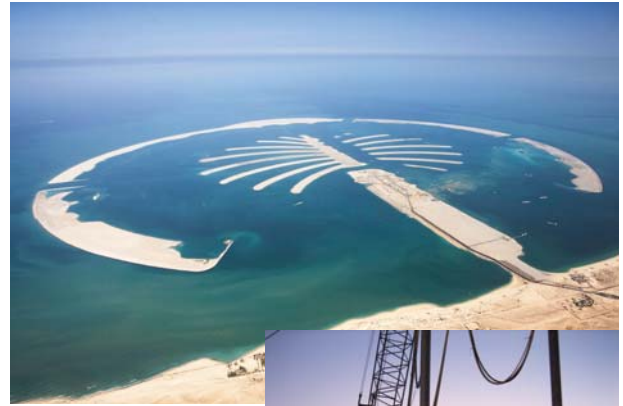
**FRANCE - Bordeaux**  
Pont de Pierre



**GREECE - Port of Patras**  
Construction of a 1,000m pier and a 500m quay



**URUGUAY - Montevideo**  
Cuenca del Plata terminal quay



**UNITED ARAB EMIRATES**  
Dubai - Palm Jebel Ali  
Vibroflotation



**FRANCE - Le Havre - Port 2000**  
Quay wall of 3.7km



**MEXICO - Altamira**  
Oil platform construction terminal



**SPAIN - Port of Barcelona**  
Settlement survey of sea bottom  
beneath an embankment  
under construction



**FRANCE - Concarneau**  
Dry Dock



**GREECE - Port of Patras**  
Construction of a 1,000m pier and a 500m quay

# MARINE PROJECTS



**MONACO - La Condamine Port**  
Soil improvement under caisson



**FRANCE - Fort de France - Pointe Simon**  
Terminal



**UNITED ARAB EMIRATES - Abu Dhabi - Al Raha Beach**  
Diaphragm wall for a 12km long quay wall



**MOZAMBIQUE - Moma Sands Jetty**  
412m jetty on Indian Ocean shore



**SOUTH AFRICA - Coega**  
Port of Ngqura



**UNITED KINGDOM - London**  
Extension de "London Exhibition Centre" sur la Tamise



**UNITED ARAB EMIRATES - Dubai - Safina Dry Dock**  
Dry dock 140m x 70m

# MARINE CONSTRUCTIONS REFURBISHMENT



**FRANCE - Brest - Dry dock n°1**  
Widening and modernisation



**BELGIUM - Anvers**  
Quay underpinning



**FRANCE - Concarneau**  
Quay underpinning



**UNITED STATES - Los Angeles**  
Quay wall refurbishment



**FIJI - Fiji Island**  
Quay wall refurbishment



**FRANCE - Dunkerque**  
Charles de Gaulle Lock  
Underpinning



**FRANCE - Saint-Gilles-Croix-de-Vie**  
Pier-head reinforcement



**FRANCE - Dieppe**  
Lock widening and deepening

ESTUARINE WORKS



**SUISSE - Viège**  
Paroi étanche pour le renforcement des digues du Rhône



← **FRANCE - Paris - Pont Royal**  
Reinforcement of the arches



**BELGIUM - Genk**  
Rehabilitation of a river lock



**FRANCE - Sète**  
Car park under canal



**FRANCE - Bordeaux - Pont de Pierre bridge**  
Reinforcement



**FRANCE - Strasbourg**  
Digue du Rhin



**FRANCE - Rouen**  
Refurbishment of the quays

- 1 - FRANCE  
Port of Calais Berth 9
- 2 - FRANCE - Martinique  
Departmental jetty at Diamant
- 3 - FRANCE  
La Turballe

- 4 - BELGIUM - Ostende  
Quay wall construction
- 5 - HONG KONG - Penny's Bay  
Vibroflotation
- 6 - HUNGARY  
Bridge of Kunszentmarton

- 7 - FRANCE - Corbeil  
Bridge over the Seine
- 8 - URUGUAY - M'Bopicua  
Port Logistic Terminal
- 9 - FRANCE - Paris  
Solférino footbridge



133, boulevard National - 92500 Rueil-Malmaison - France  
 Tel. : +33 (0) 1 47 76 42 62  
[www.soletanche-bachy.com](http://www.soletanche-bachy.com)

A SUBSIDIARY OF SOLETANCHE FREYSSINET