

TRENCHMIX[®] Process

The TRENCHMIX[®] technique has been developed by Bachy Soletanche based upon Mastenbroek Ltd equipment. It involves the construction, below ground, of trenches comprising soil mixed with binder

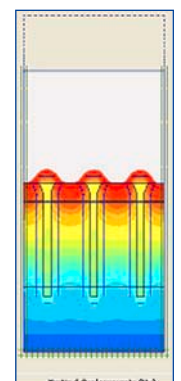
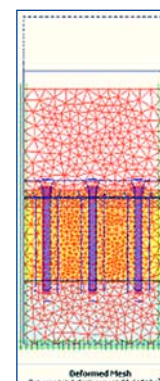
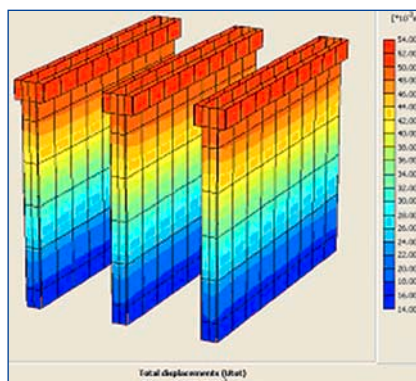
The trenches of mixed soil and binder are constructed by means of a trencher specifically modified in order to:

- break up and mix the soil rather than excavate,
- allow incorporation of binder,
- effectively mix the soil and binder in situ.

The binder may be introduced as powder (dry method) or in the form of a previously mixed grout (wet method).

In addition to the specialised equipment, the TRENCHMIX[®] technique depends on a rigorous specification and detailed procedures developed by Bachy Soletanche:

- a specific design method backed up by finite element analysis,
- determination of the binder dosage as a function of the ground properties and the specific requirements of the project,
- process controlled by the recording of parameters of execution,
- checks on site and on samples from the works allowing validation by the supervising engineer.

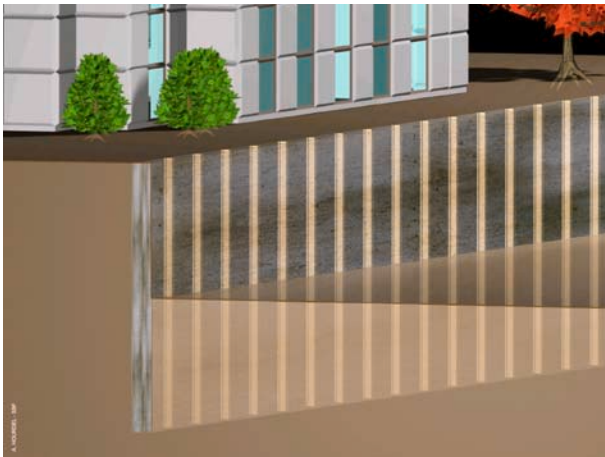
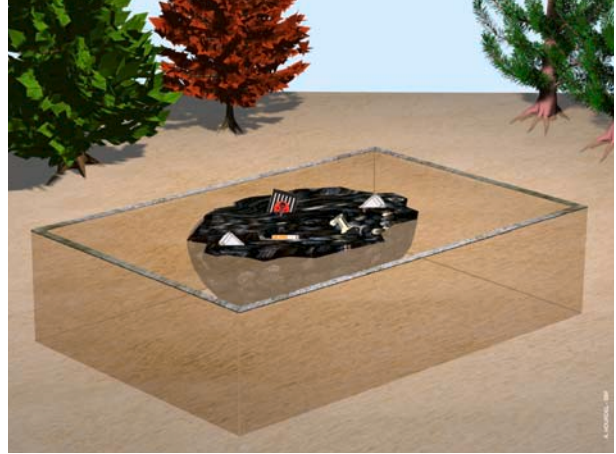


AREAS OF APPLICATION

Improvement of compressible soils beneath loaded areas: industrial units and warehouses, storage areas, road and rail embankments.



Construction of cut off walls for containment of polluted zones or control of groundwater.



Construction of temporary ground support in combination with vertical reinforcing elements (steel beams, tubes, posts).



Increase in embankment slopes by constructing high strength transverse walls.



Installation of 21 000 m² of Trenchmix® for settlement control underneath a storage area.