

GEO TECHNICAL AND MAIN CONTRACTING WORKS



BUILD ON US



SOLETANCHE BACHY

M A I N C O N T R A C T I N G W O R K S

Regardless of the size of the project, and provided that a significant proportion of the package includes geotechnical works, Soletanche Bachy can provide the complete overall management including civil works such as earth moving, foundations and in situ concrete construction. When engaged as a general contractor, Soletanche Bachy has the in house resources to undertake all complex elements related to geotechnics and the ground rather than relying on subcontractors.

U N D E R G R O U N D C A R P A R K S

Soletanche Bachy undertakes the whole of a project from feasibility studies, through design to the complete construction on a turnkey basis. We can also arrange project financing and long term operation if the client wishes. The Group is able to use its extensive geotechnical experience to optimise projects.

S T O R A G E T A N K S A N D D R A I N A G E

Soletanche Bachy has substantial experience in all types of hydraulic infrastructure storm storage tanks, drinking water resources, either underground or at the surface, pumping stations, water treatment plants, drainage tunnels and sewers, constructed using either tunnel boring machines or pipe jacking, and refurbishment. Its expertise in geotechnical and underground works is the basis of its main contracting activity.

C U T A N D C O V E R A N D T U N N E L S

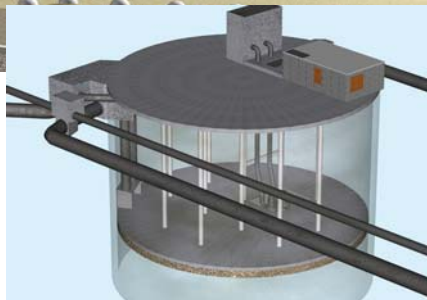
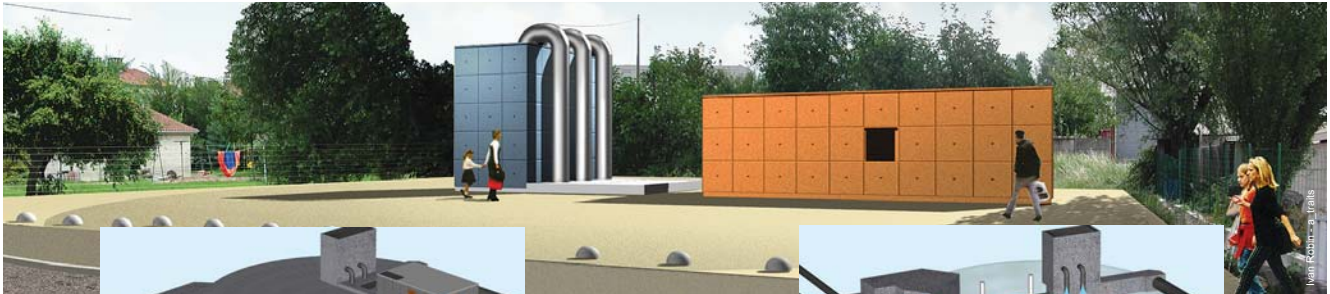
Soletanche Bachy has numerous references in the field of cut and cover tunnel construction: TGV, roads, underground transport, technical galleries.

In tunnelling, Soletanche Bachy's subsidiary CSM Bessac specialises in the management of tunnel sites and the design and construction of tunnel boring machines. In addition, expertise in the associated specialist techniques (drilling, grouting, freezing, ground water control diaphragm walls, anchorings, etc.) allows the Group to undertake integrated projects.

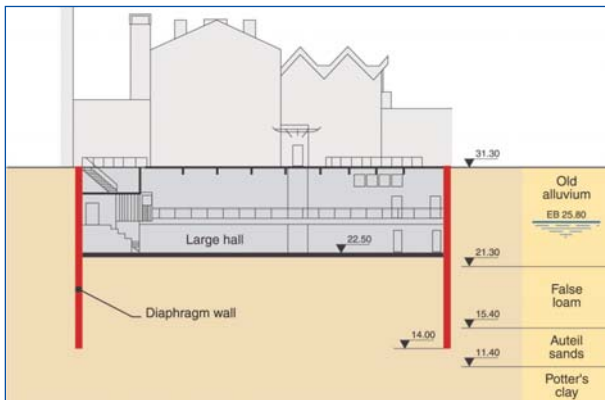
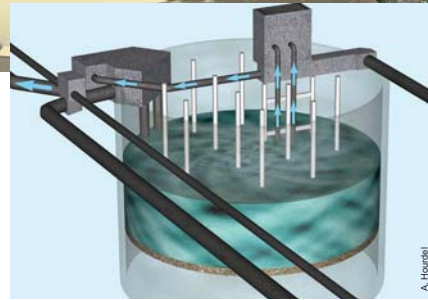
P O R T C O N S T R U C T I O N

Whether constructed on dry land or by offshore methods, port works require specific techniques and expertise, which are offered by Soletanche Bachy's wide experience. We construct quay walls, dry docks, landing stages, dolphins, sewers and ground water lowering for major excavations under the water table.

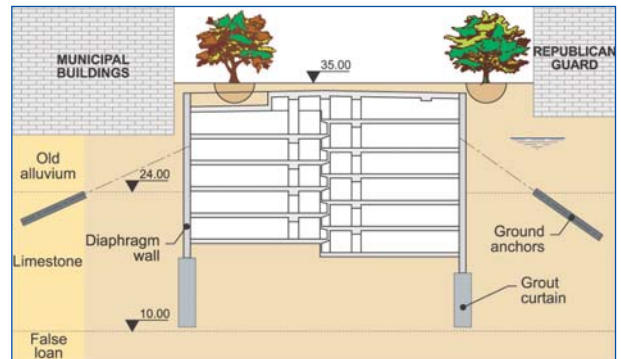
MAIN CONTRACTING DESIGN



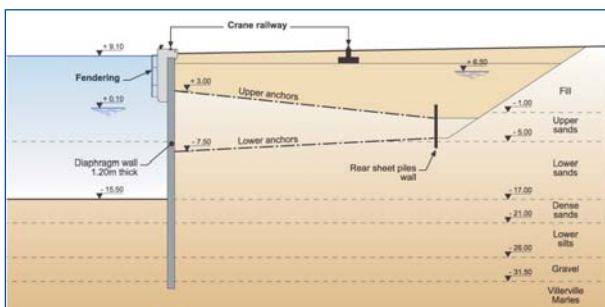
FRANCE - Floirac
Storm tank



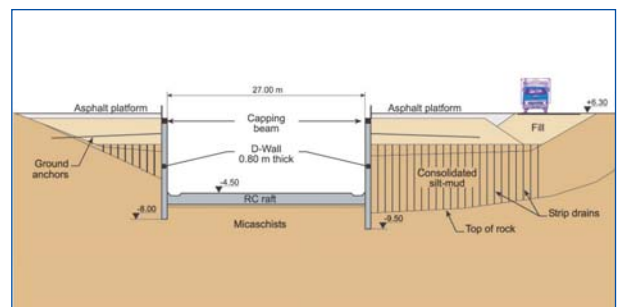
FRANCE - Paris
Private School and Lyceum La Rochefoucauld



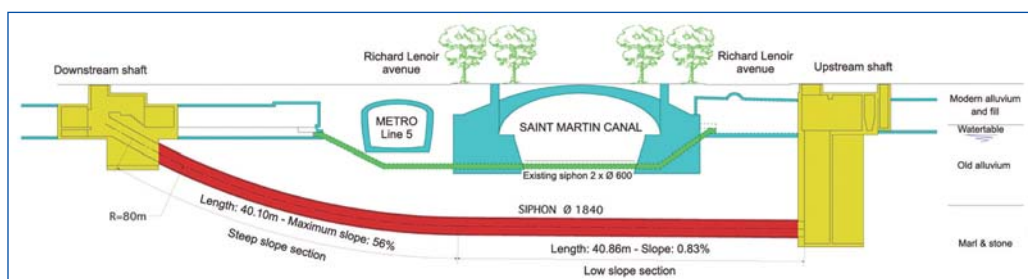
FRANCE - Paris
Car Park Baudoyer



FRANCE - Le Havre
Port 2000



FRANCE - Concarneau
Dry dock



FRANCE - Paris
Doubling of the Siphon Richard Lenoir

G E O T H E C H N I C A L A N D

U N D E R G R O U N D C A R P A R K S



FRANCE - Boulogne-Billancourt
Seguin car park



FRANCE - St Germain en Laye
Marché Neuf car park



FRANCE - Paris
Harlay car park



FRANCE - Bois-Colombes
Car park



FRANCE - Paris
St Michel car park



FRANCE - Paris
Baudoyer car park

STORM TANKS & DRAINAGE



FRANCE - Le Havre
Levesque tank



FRANCE - Loos
Joffre tank



FRANCE - Bordeaux - Floirac
Storage tank Alfred Giret



FRANCE - Lons le Saulnier
Montmorot settling tank



UNITED KINGDOM - Blackpool
Storage tank



FRANCE - Méricourt
Integrated shaft for deep storm tank - 1st innovation prize FNTF



FRANCE - Anglet
Pechmeja storm tank

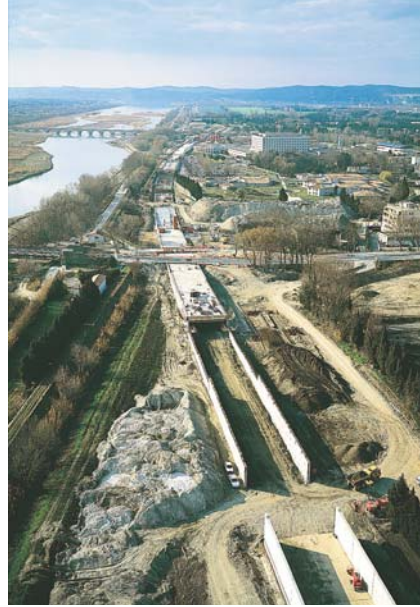


FRANCE - Arras
Storage tank for the treatment plant

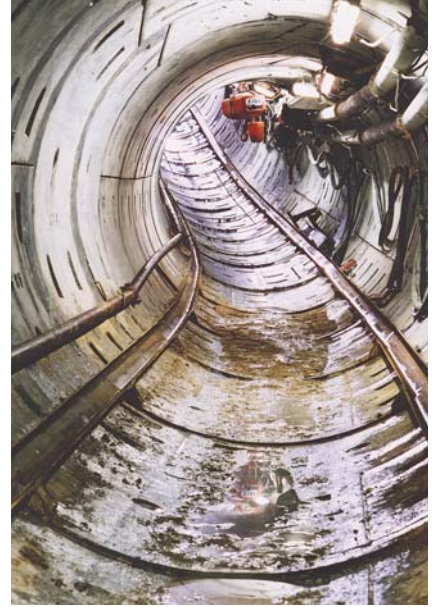
CUT AND COVER & TUNNELS



SINGAPORE - Downtown Line
Cross Street Station & Tunnels (C908)



FRANCE - Avignon
Mediterranean TGV - Trench of Courtine



FRANCE - Paris
Doubling of Richard Lenoir Siphon



MONACO
T33 tunnel



FRANCE - Marseille
La Parette cut and cover



COLOMBIA - Bogota
Bogota River Interceptor



FRANCE
Mediterranean TGV - S' André Trench

MAIN CONTRACTOR
PORT CONSTRUCTION



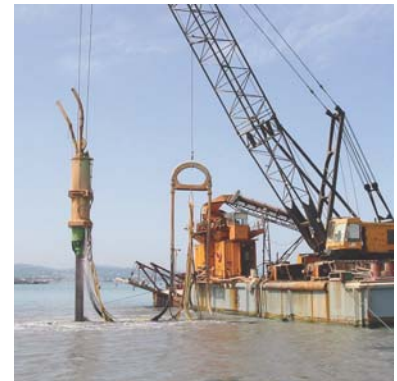
URUGUAY - Montevideo
Cuenca del Plata terminal



FRANCE - Brest
Dry dock n°1



UNITED ARAB EMIRATES - Dubai
Palm Jumeirah



GREECE
Patras Harbour



FRANCE - Le Havre
Port 2000



URUGUAY
M'Bopicia
Harbour terminal



FRANCE - Concarneau
Dry dock

- 1 - UNITED ARAB EMIRATES**
Al Raha Beach Development
- 2 - FRANCE**
Chateaufort car park

- 3 - MEXIQUE - Altamira**
Oil platform construction terminal
- 4 - FRANCE - Marseille**
Arvieux car park

- 5 - UNITED ARAB EMIRATES - Dubai**
Safina Launching Device
- 6 - FRANCE - Toulon**
2nd tube - Highway link A50/57
- 7 - FRANCE - Toulouse**
Subway



133, boulevard National - 92500 Rueil-Malmaison - France
 Tel. : +33 (0) 1 47 76 42 62
www.soletanche-bachy.com

A SUBSIDIARY OF  SOLETANCHE FREYSSINET